

**M18**



**M30**



**Q50**



**NEW**



# Series P49

**Cost effective series for basic applications with high quantities**

- **cylindrical housing M18 – M30 / cubical housing 80x80 mm**  
... for various installation and application requirements
- **large working range from 30 .. 6000 mm + small blind zone**  
... for a high degree in design freedom in the system
- **analog sensors with fixed current or voltage characteristic curve**  
... for a fast commissioning of the sensors
- **switching sensors with 1 output NO (PNP or NPN)**  
... for a simply and quick adjustment via remote

Housing	Working range	Analog output 0 .. 10 V	Digital output PNP NO
<b>M18</b>	40 cm	P49-40-M18-U-CM12	P49-40-M18-PNO-CM12
	50 cm	P49-50-M18-U-CM12	P49-50-M18-PNO-CM12
	80 cm	P49-80-M18-U-CM12	P49-80-M18-PNO-CM12
	160 cm	P49-160-M18-U-CM12	P49-160-M18-PNO-CM12
	200 cm	P49-200-M18-U-CM12	P49-200-M18-PNO-CM12
<b>M30</b>	350 cm	P49-350-M30-U-CM12	P49-350-M30-PNO-CM12
<b>Q50</b>	600 cm	P49-600-Q50-U-CM12	P49-600-Q50-PNO-CM12

## Differences Series P49 vs. Series P43 / P47

	Series P49	Series P43	Series P47
Switching output	1 x PNP NO	2 x PNP NO/NC or 2 x NPN NO/NC	1 x PNP NO or 1 x NPN NO
Analog output	0 .. 10 V (fixed characteristic curve)	0 .. 10 V or 4 .. 20 mA (variable characteristic curve)	0 .. 10 V (fixed characteristic curve)
Indicator switching status	No	Yes	Yes
Echo indication	No	Yes	No
Synchronization	No	No	No
Adjustments	Only sensors with digital output via remote	remote	potentiometer

1. Put the object into the desired position of the switching point
2. Connect remote-line of the sensor for ca. 2 sec. with 0V/GND.
3. After release of the line the sensor is taught for the desired distance

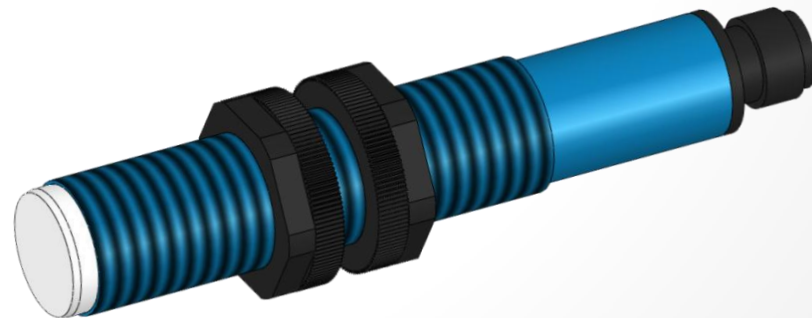
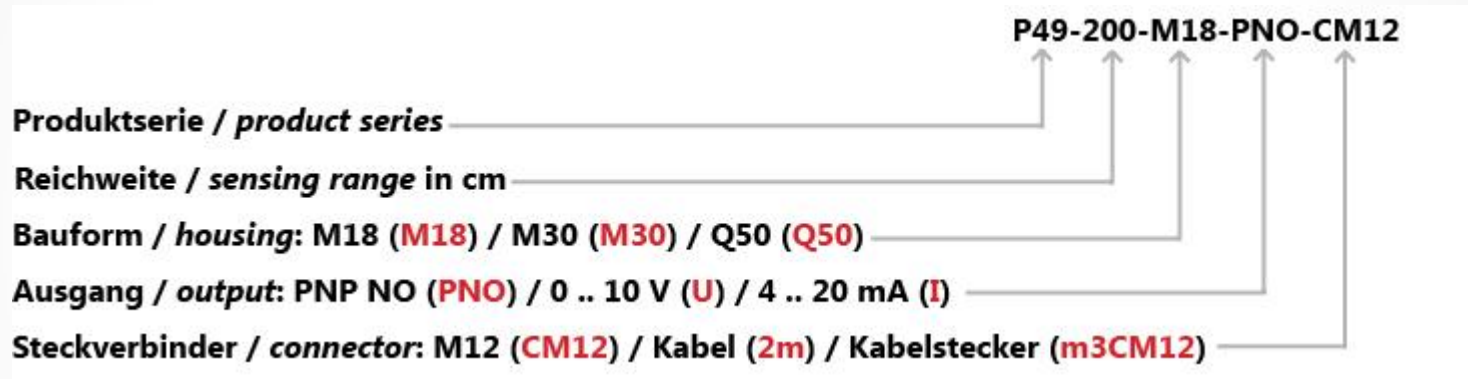


**Attention:** The analogue sensors of the series P49 have a fixed characteristic curve so they are not adjustable!

## Distinction from other series & generating of volume business

- Generating of **volume business** with series P49  
The great advantages for the use of our P49 will be especially in basic applications **with high quantities** which cannot be realized by P43-series.
- For **existing customers** with solved applications (with series P43/P47) and where no price pressure exists, these products should **remain activ!**
- **A change** of series P43/P47 will only be advisable, if the prices of those two series will be under hard pressure by the market.

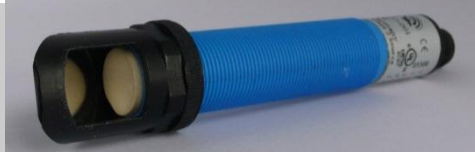
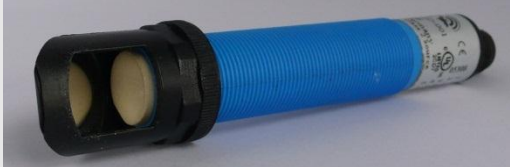
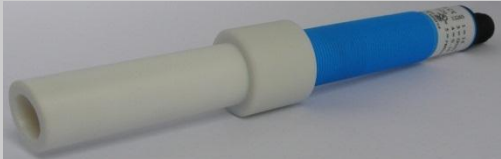
Objection	Argumentation
<p>Why don't the sensors of series P49 have a LED for indicating the switching status?</p>	<p>In view of the excellent price-performance ratio the implementation of a LED has been renounced. In the accessory list a connector-cable with LED is available.</p>
<p>Why is the characteristic curve of the analog sensors not adjustable?</p>	<p>The development of series P49 was aiming for the use in basic applications with high quantities. In such applications a quick and easy installation (without adjustment of the working range) is required. Additionally, no accidental or intentional change of the settings can be possible.</p>








new product code	old product code
P49-200-M18-PNO-CM12	P49-F4V-2D-001-180E
P49-160-M18-PNO-CM12	P49-F4V-2D-001-220E
P49-80-M18-PNO-CM12	P49-F4V-2D-001-300E
P49-50-M18-PNO-CM12	P49-F4V-2D-001-330E
P49-40-M18-PNO-CM12	P49-F4V-2D-001-360E
P49-200-M18-U-CM12	P49-F4V-2D-1C0-180E
P49-160-M18-U-CM12	P49-F4V-2D-1C0-220E
P49-80-M18-U-CM12	P49-F4V-2D-1C0-300E
P49-50-M18-U-CM12	P49-F4V-2D-1C0-330E
P49-40-M18-U-CM12	P49-F4V-2D-1C0-360E
P49-350-M30-PNO-CM12	P49-T4V-2D-001-130E
P49-350-M30-U-CM12	P49-T4V-2D-1C0-130E
P49-600-Q50-PNO-CM12	P49-O4V-2D-001-80E
P49-600-Q50-U-CM12	P49-O4V-2D-1C0-80E

Article	Description	Size	Image
P43178389-018	Mounting clamp	M18	
P43178389-030	Mounting clamp	M30	
P43192871-003	Metall reflector (flat, stainless steel)	M18	
P43192871-001	Metall reflector (flat, stainless steel)	M30	
P43192871-004	Metall reflector (focus, stainless steel)	M18	
P43192871-002	Metall reflector (focus, stainless steel)	M30	

Article	Description	Size	Image
P66195116-002	Plastic-Reflector (45°)	M18	
P66195116-001	Plastic-Reflector (45°)	M30	
P66195171-001	Beam shaper*	M18	

**Attention:**

\*The beam shaper is not suitable for the following sensors with M18 housing:  
P49-200-M18-PNO-CM12 / P49-200-M18-U-CM12

Article	Description	Image
P66195214-001	Cable connector (2m)	
P66195214-002	Cable connector (5m)	
P66195214-001	Cable connector angled (2m)	
P55000027-001	Teach-In adaptor	